

**7.6kW - 15.2kW**

**SMD160** Range

\_ Rev. C \_

**Application and Standards**

SMD160 range product is the DC generator and designed to be applicable for telecom and lighting tower(LED)  
Comply with standards of IEC60034,NEMA MG1-32,IS08528,CSA C22.2-100 , VDE 0530 , GB755

**Electrical Features**

H class insulation  
Output of DC voltage is 48V/24V, and can be upto 56V/28V  
DC voltage ripple <1%  
Is able to provide three different speed signal to engine.

**Mechanical Features**

Be protected to IP23, and IP44 is optional  
Both single bearing and double bearing configurations are available  
Sealed for life bearings  
Blackening coupling disc  
The rotors are dynamically balanced according to ISO 1940. A half-key balanced for double bearings.



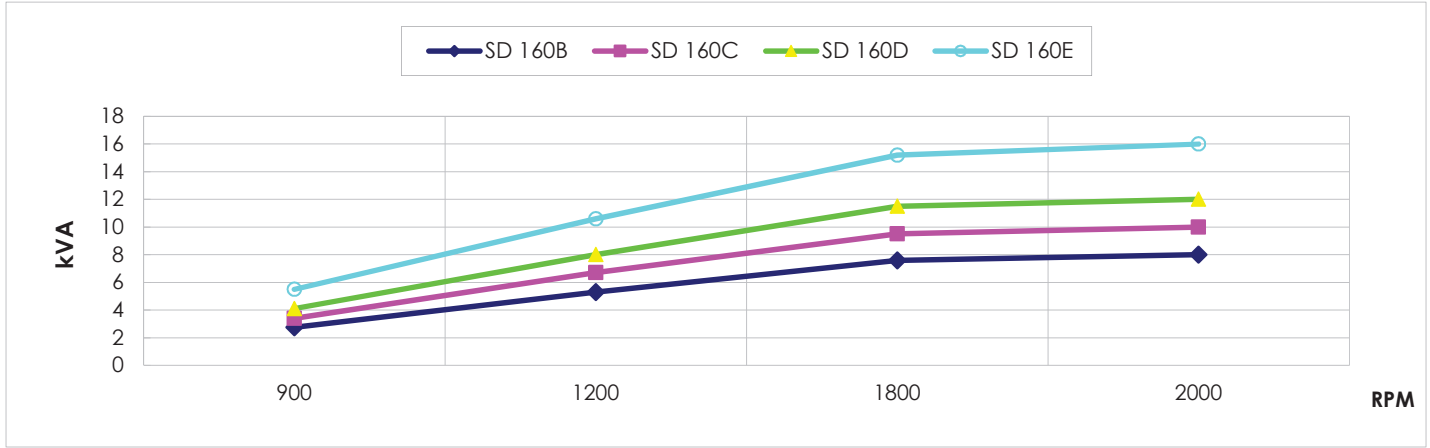
**Common Data**

Insulation	H	Overspeed	2500rpm	DC Voltage Ripple	<1%
Altitude	<=1000m	Leads	2	AVR	VR303 / VR307
Protection	IP23			Output Voltage	48V DC/ 24V DC

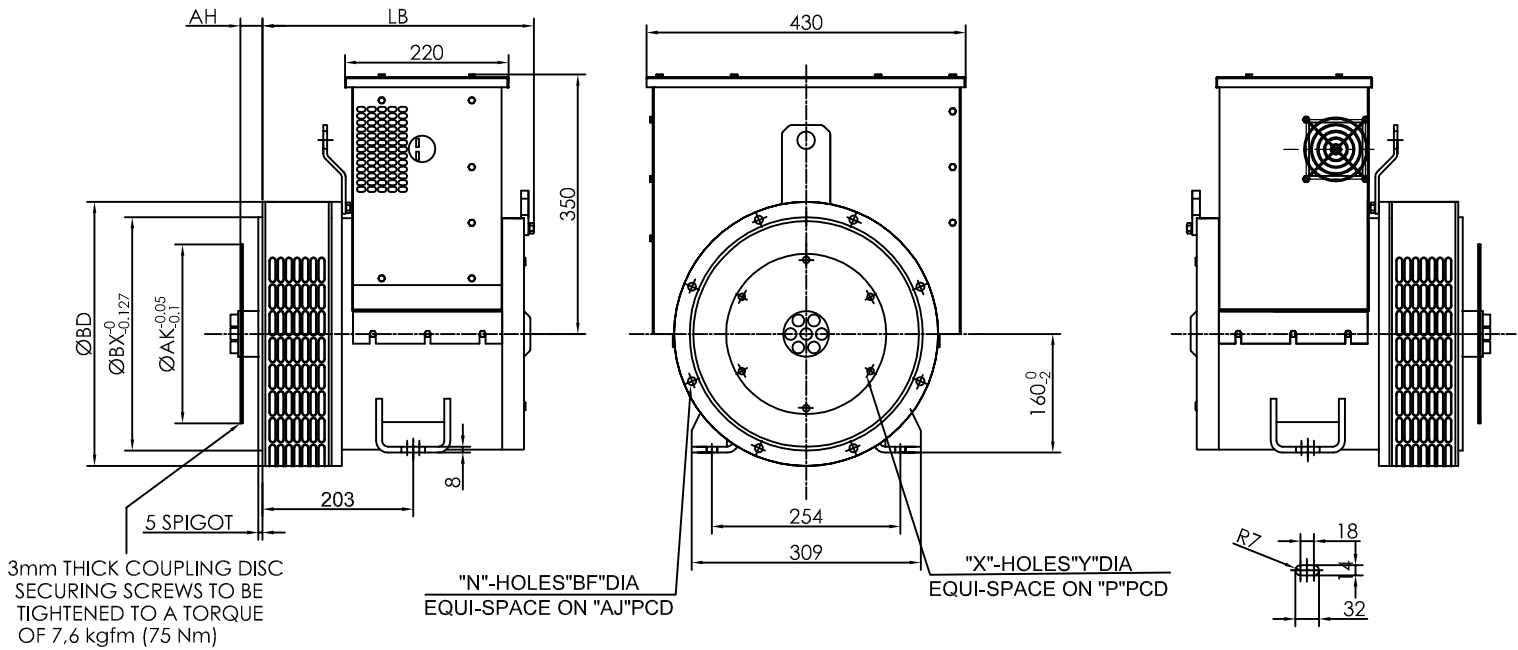
**Rating**

DC Voltage		48V DC				Efficiency
Rotating Speed		1200	1500	1800	2000	
SMD160B	kVA	5.3	6.4	7.6	8.0	76.2%
	kW	5.0	6.1	7.2	7.6	
SMD160C	kVA	6.7	8.0	9.5	10.0	78.4%
	kW	6.4	7.6	9.0	9.5	
SMD160D	kVA	8.0	9.6	11.5	12.0	79.1%
	kW	7.6	9.1	10.9	11.4	
SMD160E	kVA	10.6	12.8	15.2	16.0	80.2%
	kW	10.1	12.2	14.4	15.2	

## Rotating Speed vs. Power

**SMD160 B/C/D/E**


## Outline Drawing



Dimension ( mm )	SAE 3	SAE 4/5		Net W.	Gross W.	Packing
Model	LB	LB		kg	kg	L x W x H (mm)
SMD 160B	376.5	364.5		88	100	740×650×700
SMD 160C	376.5	364.5		98	110	740×650×700
SMD 160D	403.5	391.5		106	118	740×650×700
SMD 160E	403.5	391.5		111	123	740×650×700

Flange ( mm )								Disc (mm)						
SAE#	BD	AK	AJ	U°	BF	N	C	SAE#	BX	P	X	Y	AH	
SAE 5	356	314.32	333.38	22.5	11	8	203	11.5	352.42	333.38	8	11	39.6	
SAE 4	408	361.95	381	15	11	12	203	10	314.32	295.28	8	11	53.8	
SAE 3	460	409.58	428.62	15	11	12	215	8	263.52	244.48	6	11	62	
								7.5	241.3	222.25	8	9	30.2	
								6.5	215.9	200.02	6	9	30.2	